

Leicestershire Fire & Rescue Service selects new 2-man deployable NBC Safeframe™ Lite 18m² Shelter

Objective

To acquire a lightweight rapid deploy shelter for alternative uses, including Incident Command Centre and Breathing Apparatus Main Control.



Problem

Leicestershire Fire & Rescue is a busy Service dealing with some 15,000 emergency incidents each year from its 20 fire stations across Leicestershire, Rutland and the city of Leicester.

Whilst the Fire & Rescue Service (FRS) is traditionally known for offering an excellent response to emergency incidents, they now do so much more than fighting fires; a high proportion of their work involves rescuing people from road traffic collisions, dealing with chemical incidents and preparing to deal with major emergencies from widespread flooding to terrorist incidents.

As part of their response preparedness, the FRS needs to be able to deploy portable structures at the incident scene for Command or BA Control purposes.

Leicestershire FRS started to research the market for shelters that were rapidly-deployable, but that were lighter than traditional air-filled structures and could therefore be deployed with only 2 people.

Solution

Leicestershire FRS evaluated their options and finally sourced a solution provided by NBC Group, namely the new Safeframe™ Lite 18m² Shelter.

The Safeframe™ Emergency Responders Shelter is a proven solution provided by NBC. It is widely used by Emergency Services including the UK Ambulance Service. But it is a rugged and therefore relatively heavy design with an 18m² shelter weighing in at 120kg.

The new Safeframe™ Lite weighs in at only 50kg (resulting in the 2 person deploy). Significantly in these cash-strapped times, it is also less than half the cost of the traditional Safeframe™ design.

Pete Trayner, responsible for Technical Support Services within Leicestershire FRS commented:

“We attended the Fire & Rescue Show in Harrogate and didn't see any shelters that were of interest. NBC Group were prepared to adapt their SF range and (in consultation with Leicestershire FRS) developed the robust multi-functional shelter that we required.”

Now there's a better way



Design

The NBC Safeframe™ Lite is a rapid-deploy general purpose shelter configured specifically to meet the demands of the Emergency Services.

Major Benefits

- Speed of deploy - 2 people can deploy in less than 10 minutes
- Interoperable with other Safeframe™ Shelters & configurable to give I T & H structures through modular design
- Ease of use & therefore minimal ongoing training requirements
- Minimal ongoing Service & Maintenance requirements
- No heavy lifting involved/ no need for Manual Handling Equipment (MHE)
- Integrated groundsheet allows rapid deploy and provides a more protected working environment
- PVC canvas is both durable and easy to keep clean
- A rigid and weather-resistant structure



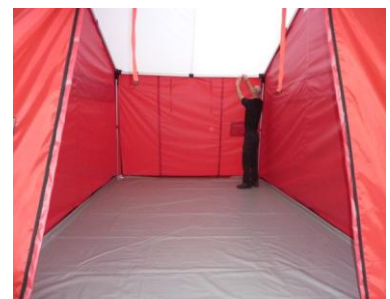
Full Service Offering

- NBC's supply was not limited to just the Shelter, but included:
 - A range of accessories including: Inter-Changeable Signage; Shelter Ballast & Internal Lighting
 - Deploy & Strike-Down Training
 - First year Service & Maintenance Contract



Deployment Dependability

- A combination of the durable design, NBC's Service & Maintenance provision and the Fire Service's commitment to Emergency Preparedness through regular training ensure this deployment dependability.



Shelter Type	Purpose	Number of Showers	Working Space
SF 3	Personal/ VIP/ PRPS Mobile Decontamination Shelter	1 Standard	2.25 m ²
SF 9	2 Lane Mobile Decontamination Shelter	4 Standard	9 m ²
SF 15	All-In-One Mobile Decontamination Shelter	4 Standard	15 m ²
SF 18	3 Lane Mobile Decontamination Shelter	6 Standard	18 m ²
MDU	Mass Mobile Decontamination Shelter	6 Standard	54 m ²

Available Options within the NBC Safeframe™ Shelter Range

Certainty in an Uncertain World

